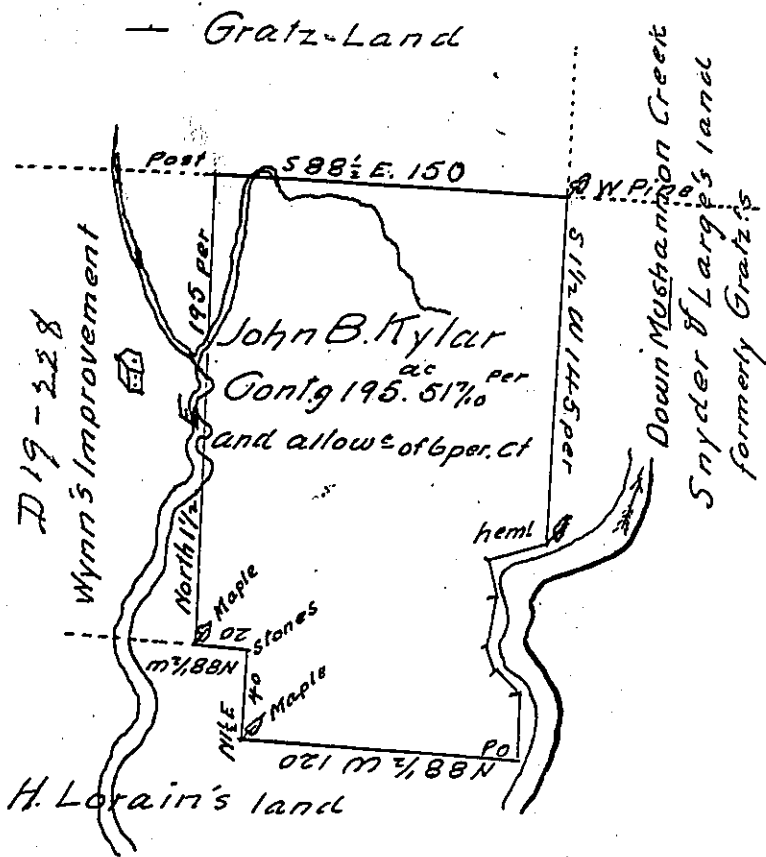


Courses up the Creek  
from Hem<sup>l</sup> to Post

- S. 68 W 28 per
- S 22 E 10
- S 3½ W 12
- S 11 E 6
- S 36 E 15
- S 2 E 40



Draft of a tract of land (Improved) situate in Morris Township Clearfield County, containing One Hundred and ninety five acres and fifty one perches & seven tenths of a perch and the usual allowance of six per Cent for Roads &c. Surveyed 15<sup>th</sup> December A.D. 1851 in pursuance of a Warrant granted to John B. Kylar dated 5<sup>th</sup> December A.D. 1851

John L. Guttle  
County Surveyor

To J. Porter Brawley Esq  
Surveyor General.

N. B. about sixty acres improved land on above tract.  
improvement made in 1845 J.L.G.

IN TESTIMONY that the above is a copy of the original remaining on file in the Department of Internal Affairs of Pennsylvania, made conformably to an Act of Assembly approved the 16th day of February, 1833, I have hereunto set my Hand and caused the Seal of said Department to be affixed at Harrisburg, this first day of August 1905

*George D. Brown*  
Secretary of Internal Affairs